

MOTE CAMP

SUMMER 2024



Get ready for a fin-tastic time!



#MakeTheMoteOfSummer



MOTE



MARINE LABORATORY
& AQUARIUM

Welcome

Welcome to Mote Marine Laboratory's Summer Camps! At Mote Camps, we seamlessly integrate our cutting-edge research with enjoyable, interactive, and age-appropriate activities. Throughout the year, when school is not in session, we provide engaging STEM adventures through our Summer and Day Camps at Mote Aquarium. Our primary aim is to empower campers to move beyond conventional textbooks and delve into real-world experiences. Participants have the chance to explore the marvels of marine animals and ecosystems investigated by Mote scientists, offering a fantastic avenue for advancing STEM education (science, technology, engineering, and math) during breaks from school.

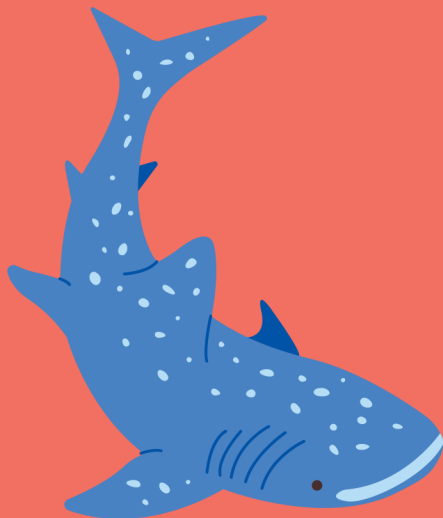
Ensuring a secure and pleasant learning setting is our top priority. Our camps receive vigilant supervision from our committed team of Mote Educators, Interns, and Volunteers, each of whom has completed a thorough background screening. All educators hold certifications in First Aid, CPR/AED, and Epi-Pen administration to further enhance the safety measures in place. For water activities, a certified lifeguard will be present.

Mote Education Staff



What to Wear

Please arrive at camp in comfortable, lightweight clothes and closed toe and heel shoes. No flip flops or sandals; tennis shoes are recommended. Please put sunscreen on before coming to camp and bring extra in your bag. Hat and sunglasses are recommended every day.



What to Bring

- A filled, closed-top water bottle
- Sunscreen
- Hat (optional)
- Sunglasses (optional)
- MORNING CAMPS: Snorkel gear - mask & snorkel (fins are not needed for camps), bathing suit, towel, change of clothes & bag for wet clothes
- AFTERNOON CAMPS: Water-ready for 1 day of field sampling (reminder email will confirm which day)

Please make sure to label each item with your camper's first and last name.

Important Note

We ask that toys, dolls, and electronic devices such as iPads stay home. Jewelry, money, and other personal valuables should also not be brought to camp. Campers may bring cell phones, but they are not permitted for use during the day (including lunchtime). Campers will be directed to put away a phone or device that presents a distraction or disrupts camp.

Mote is not responsible for any items that are misplaced, damaged, and/or stolen.

Snacks & Meals

Camps are highly active, so please make sure you have a full and happy tummy when you arrive at Mote Camp. Campers will need to a one nut-free snack each day for our snack break. Camper attending for the full day, will need to pack a nut-free lunch and two nut-free snacks.

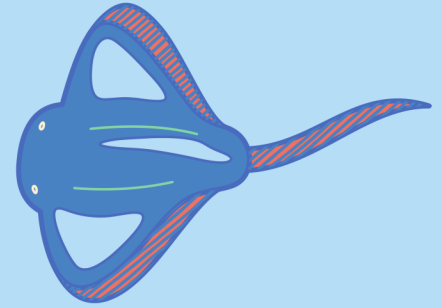
Mote camp is a nut-free camp, please plan accordingly.

Morning Camps 8:00 - 12:00



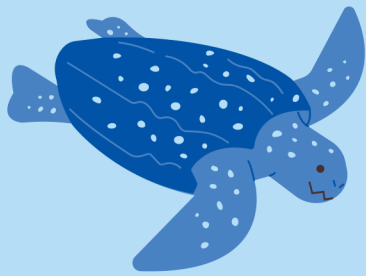
Check-In

Check-in will begin at the front of the Aquarium at 7:45AM. Please arrive no earlier than 7:45 a.m. and no later than 8:00 a.m.



Check-Out

Check-out will begin PROMPTLY at 12:00PM. Please review your reminder email sent Friday before your camp week for additional details.

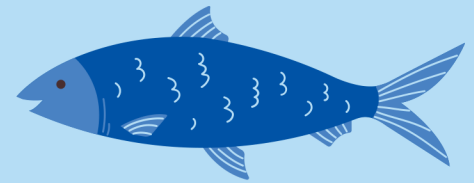


Afternoon Camps 1:00 - 5:00



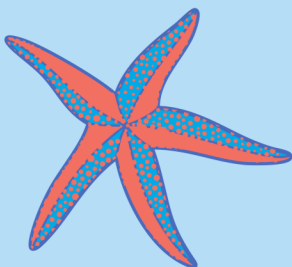
Check-In

Check-in will begin at 12:45PM (exact locations for each afternoon camp will be detailed in your reminder email). Please arrive no earlier than 12:45 p.m. and no later than 1:00 p.m.



Check-Out

Check-out will begin PROMPTLY at 5:00PM. Please review your reminder email sent the Friday before your camp week for additional details.



Camp Program Information & Policies

DISCOUNTS

We offer a 10% discount on camp tuition for Mote Members. For members to use their discount they will need to input their ID number when registering for camp. The discount can only be applied for one child at a time per transaction. To register for multiple weeks of camp, complete an individual transaction per child per week to receive the 10% discount.

There are no other discounts offered unless otherwise noted on the camp website. Reciprocal memberships do not qualify for a discount on Mote Camp tuition.

RELEASE FORM REQUIREMENT

All paperwork is due within THREE DAYS of registering. You will be asked to upload the form(s) to the account you used to register for camps. Please see your registration confirmation email for further information. We must receive a completed and signed Medical and Video Release Form or your camper will not be able to attend, and will forfeit their registration. Please list all allergies, medications, medical and/or behavioral conditions.

CHECK-IN/OUT POLICY & LATE FEES

Your child must be signed in and out every day by a parent or guardian when dropping off and picking up for camp. We use a password system during this process to ensure the safety of our campers. An additional charge of \$15 for every 30 minutes, or a fraction thereof, will be assessed for late pick-up. This fee will be added to your online account and you will be instructed to log in and pay for any fees accumulated during your camp week.

FINAL PAYMENT

Mote Camp offers payment plans for Summer Camp, depending on when you register for camp. Your final auto-payment date will be detailed at time of registration. You must update your account with the most accurate payment forms should your credit card information change before your automatic payment date; if your automatic payment is unable to be processed, you will be subject to a \$10 processing fee. Note: registrations made after Mote has closed registration (the Tuesday before a camp week begins) will be subject to a \$25 late registration fee.

Camp Program Information & Policies

TRANSFER POLICY


If space is available, you may transfer your camper to a different camp session if you make your request in writing to camps@mote.org, at least TWO WEEKS (14 days) before your camp start date. Transfers are not guaranteed and will be approved on a case-by-case basis, dependent upon the timing of your request and availability in the requested camp week. A transfer fee of \$10 will be applied to each transfer, per camper and per day. If we can process your transfer, you will receive an email confirmation as well as instructions for paying the transfer fee. Refunds are not offered in the event your transfer cannot be completed.

CANCELLATION POLICY

There are no refunds on Mote Camp Programs. If you must withdraw your camper(s) and you do so more than THREE weeks (21 days) in advance, you will receive a credit that may be used for a future Mote Camp. All credits/coupons expire within 12 months of the issue date. Any requests for changes or cancellations of your camp registration MUST be made in writing to camps@mote.org. Changes or cancellations over the phone or via voicemail will not be accepted.

Changes or cancellations made within three weeks of the program and no-shows will be charged in full. Should your camper be late, need to be picked up early, or be unable to attend one or more days of camp, there will be no refund, in full or prorated for days/time missed.

Mote reserves the right to modify any program or schedule. Mote reserves the right to separate or combine camps. Modification of a program schedule by Mote does not constitute grounds for a refund. Should Mote cancel camp for any reason, you will have the option of transferring to another camp (if available), choosing a credit in full to be used for a future camp program, or receiving a refund for the registration fee paid minus a payment processing fee of \$15.00.



Camp Program Information & Policies

ILLNESS AND INJURY POLICY

In case of an emergency, 911 will be called immediately. Children with symptoms like vomiting, fever, cold, discharging eyes, stomach pain, rash, diarrhea, sore throat, or nausea cannot attend camp. If a child gets sick at camp, they will be isolated, and the emergency contact/parent will be notified. Please pick up your child for a fever over 100°F, severe cough, vomiting, conjunctivitis, sore throat, ringworm, lice, severe headache, or COVID-19 symptoms. Our health protocols are continuously refined based on guidance from governmental agencies, including the Centers for Disease Control and Prevention, Sarasota County Government, and the Florida Department of Health. Please be aware that protocols may be subject to change following current recommendations.

ACCOMMODATIONS

Mote is committed to ensuring equal access to all services, programs, and activities by providing reasonable accommodations, program modifications, and inclusion services. If your camper needs physical or behavioral support, has specific learning style requirements, or exhibits concerning behaviors, please register for the chosen summer camp and then send accommodation requests to camps@mote.org after registration. Note that Mote is wheelchair accessible, with ramps and elevators, but our snorkeling docks, boats, and kayaks are currently not wheelchair accessible.

Additionally, for the safety of all campers and staff, parents or guardians are not permitted to follow or attend camp activities or campers during camp hours.

CLASSROOM AIDE POLICY

Mote welcomes children of all ability levels to our programs. To ensure the best experience for your camper, we encourage families to contact the Camps Program Manager in advance for any necessary accommodations. If an additional classroom aide is required, they must be over 18 years old and undergo a background check through the state of Florida at least two weeks before the camp starts. Families are responsible for making and covering the cost of these arrangements. According to the Florida Department of Children and Families, individuals must have level 2 background clearance to interact with children in a summer camp program. For arrangements and further information, please contact the Camps Program Manager at camps@mote.org or 941-388-4441 x164.

Camp Program Information & Policies

WEATHER POLICY

Mote Camp staff continuously monitor the weather and other water-related conditions that may impact the well-being of our participants, staff, and volunteers. Families will be notified via email if camps are canceled due to inclement weather (i.e. a hurricane). Refunds are only given if Mote cancels a camp and will be prorated if the camp is not canceled for the entire week. In the event of other environmental factors (such as red tide), camps will not be canceled but activities may be altered. Mote Camp reserves the right to change camp activities for the health and safety of participants. This does not constitute grounds for a refund.

About Florida red tide: This type of harmful algal bloom is caused by the naturally occurring, microscopic, plant-like organism *Karenia brevis*. Florida red tides produce toxins that can irritate the skin, eyes, and throat of people on shore and in the water. The toxins can also affect the breathing of some people. People with severe asthma or chronic lung conditions should avoid areas with active red tides. Red tide-focused health information and resources are here.

BEHAVIOR POLICY

Mote Camps are fun, educational, and active camps. Campers are expected to listen to their Mote Educators, follow directions and safety instructions, respect their peers, and work collaboratively. Mote Marine Laboratory & Aquarium reserves the right to remove a camper from Mote Camp at any time. If a continual behavior problem occurs, one or more of the following consequences will be taken:

- Campers will be asked to stop the behavior immediately and a parent/guardian will be notified at the end of the day. If the incident involves more than one camper, campers may be asked to speak together with staff present or be separated from each other for the remainder of camp.
- Campers will have a sit down discussion with the Camp Principal and review options on how to better the behavior. Parents/guardians will be notified at that time and made aware of the situation. Campers may be asked to sit with the Camp Principal until the end of camp or until a parent/guardian can pick the camper up.
- Campers will be removed from camp, and from the remainder of their camp week. Parents/guardians must come pick them up immediately. This does not warrant a refund.

Camp Rules

- Be respectful to fellow campers, Mote Educators and Mote Volunteers & Interns.
- Follow directions from Camp Educators, Volunteers, & Interns and any rules posted inside Mote buildings.
- Stay with your group at ALL times.
- Walk, don't run, in all locations and areas.
- Respect other camper's personal space.
- No touching, hitting, or horseplay.
- Respect the animals and their environment. Do not bang on the glass or other areas of the animal exhibits. During some camps, you may have the opportunity to interact with an animal and you must always use a gentle, two-finger touch.
- Campers who do not follow the rules may be asked to leave camp.

Above all, please arrive ready to participate, make new friends, learn about science and have a blast!

We can't wait to 'sea' you at camp!



Questions?

**Contact us: camps@mote.org or
941-388-4441, ext. 164**